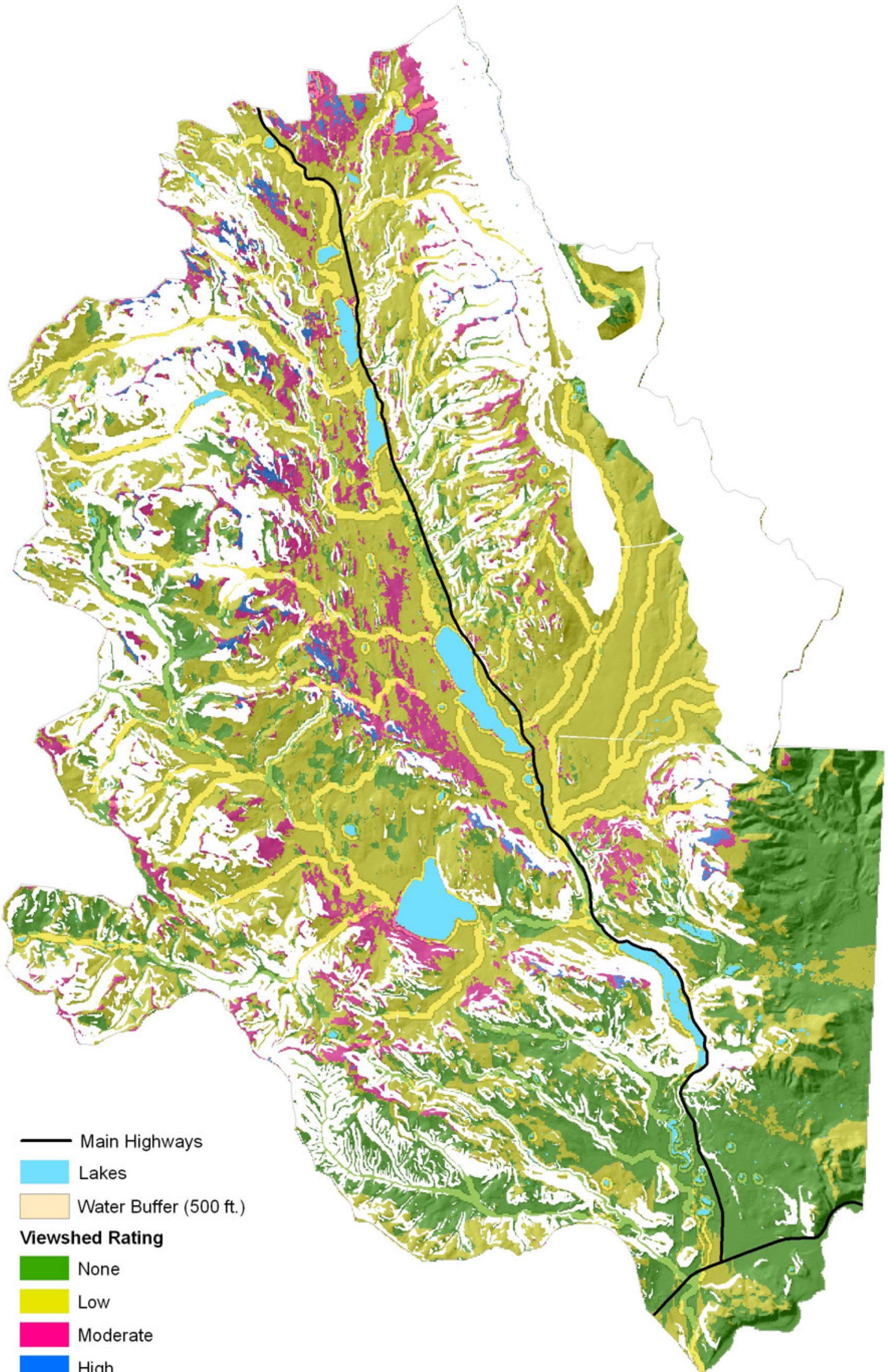


Development Potential in the Clearwater Watershed



- Main Highways
- Lakes
- Water Buffer (500 ft.)
- Watershed Rating**
- None
- Low
- Moderate
- High
- Slope over 25%

ECOSYSTEM
MANAGEMENT
RESEARCH
INSTITUTE

Figure 32. Development Potential in the Clearwater Watershed (Derived from USGS NED, 2005 and USFWS NWI, 2005).